

FM Series – Floor Mount Enclosures



Delivery

Enclosure supplied with:

- Mounting plate
- 100mm plinth (black)
- Rails fixed on the rear of door
- Cable entry plate with sealing gasket
- Screws for earth connection and mounting accessories
- Locking system: 3-point rod locking

Specifications

Material:	Sheet steel <ul style="list-style-type: none"> • Enclosure thickness: 1.6mm • Door thickness: 1.6mm • Mounting plate thickness: 2.0mm (white)
Colour/Finish:	Enclosure: Orange RAL2000 Textured Finish Mounting Plate: Gloss White
Treatment:	Polyester Powder Coating - UV protected
Protection Ratings:	<ul style="list-style-type: none"> • IP55 with FMCAN series rain hood • Impact resistance IK10
Properties:	High protection degree guaranteed by the two-component polyurethane foam seal

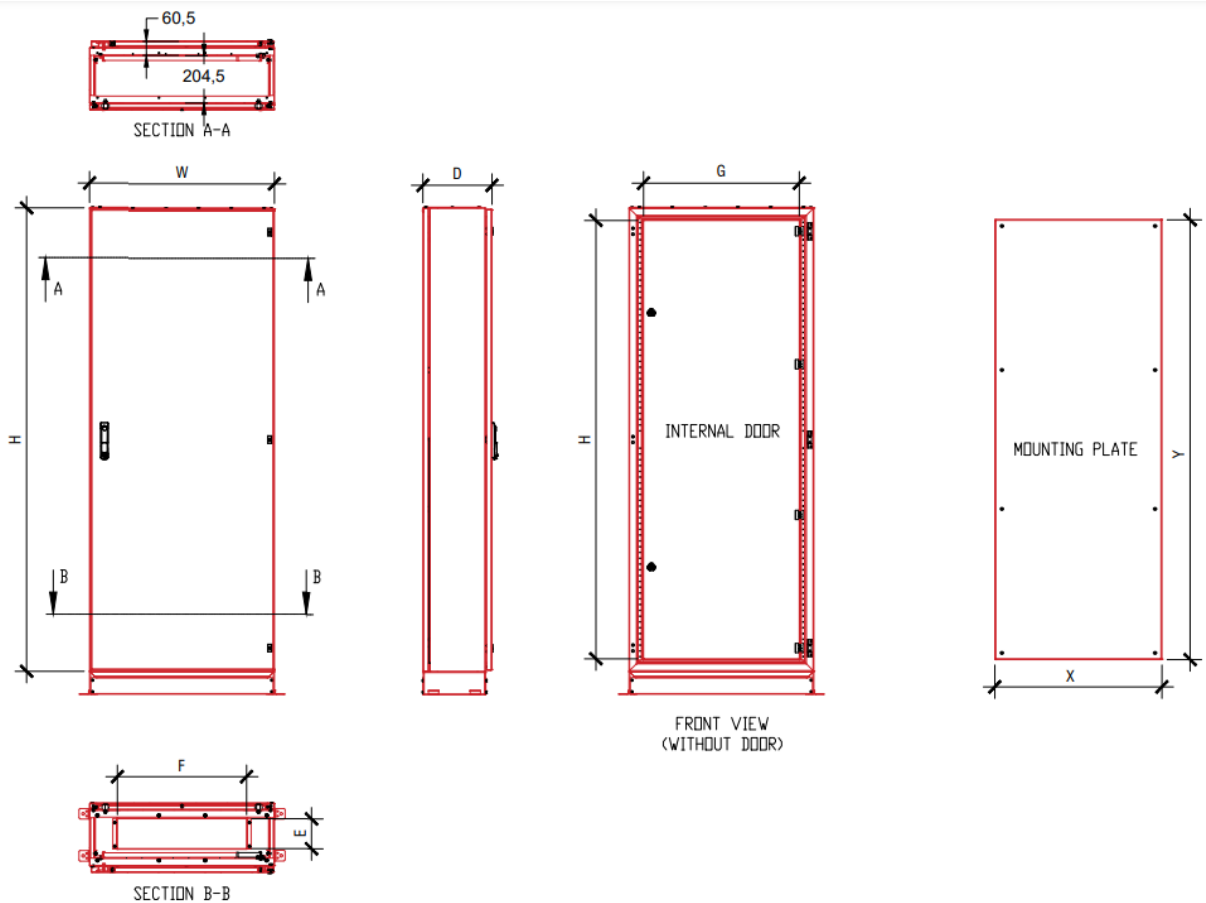
Product images



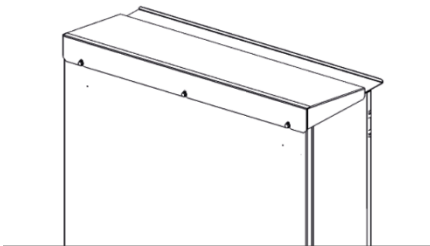
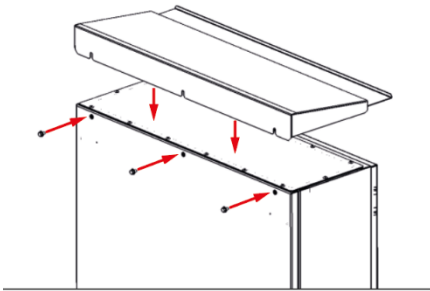
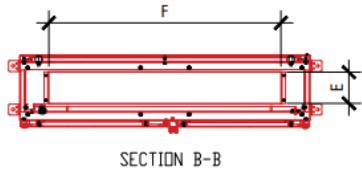
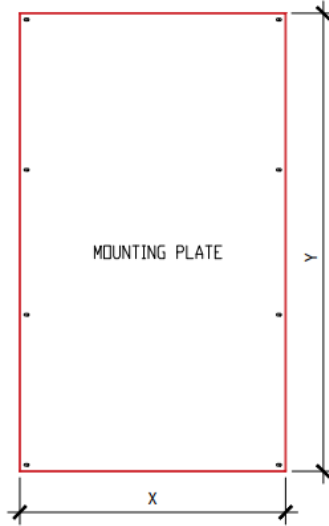
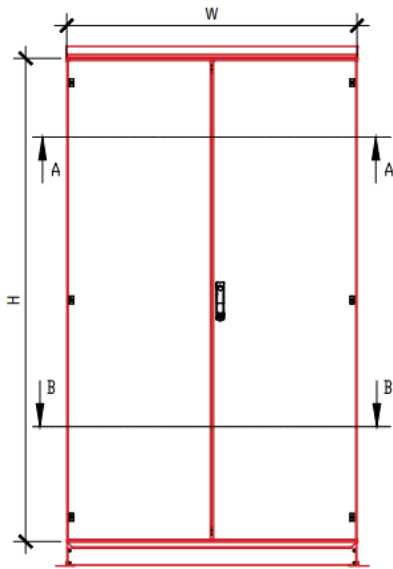
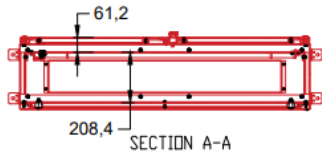
Product dimensions

Part No.	Box Dimensions			Cable Entry		Mounting Plate		Door Type
	W	H	D	E	F	X	Y	
FM6163OR	600	1600	300	358	114	500	1500	Single
FM6183OR	600	1800	300	358	114	500	1700	Single
FM6203OR	600	2000	300	358	114	500	1900	Single
FM8163OR	800	1600	300	558	114	700	1500	Single
FM8183OR	800	1800	300	558	114	700	1700	Single
FM8203OR	800	2000	300	558	114	700	1900	Single
FM10183OR	1000	1800	300	758	114	900	1700	Double
FM10203OR	1000	2000	300	758	114	900	1900	Double
FM12183OR	1200	1800	300	958	114	1100	1700	Double
FM12203OR	1200	2000	300	958	114	1100	1900	Double

Single Door



Double Door



Subject to change without notice