

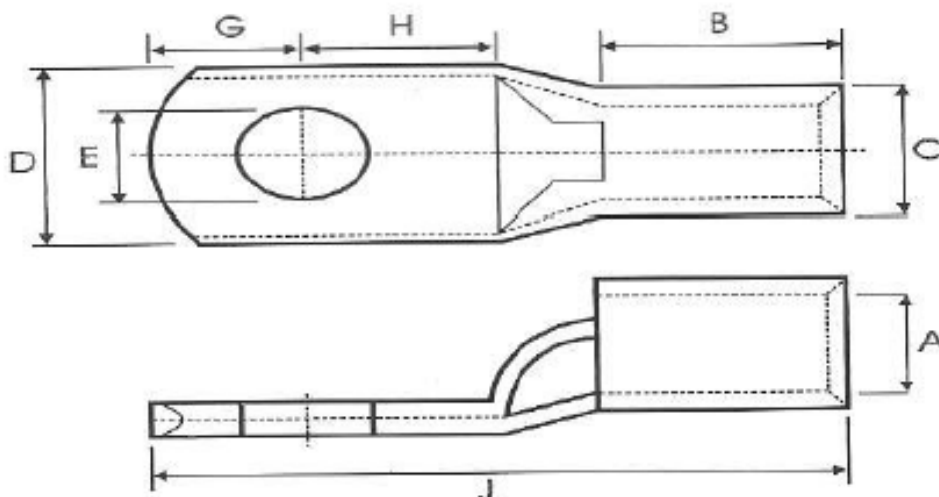
Copper Lugs - Straight



Specifications

Material:	Oxygen Free High Conductivity Copper <ul style="list-style-type: none"> - Copper 99.90% - Lead 0.005% - Bismuth 0.001%
Coating:	Tin – 5-7 microns
Ultimate tensile strength:	205 N / mm ² Avg
% Elongation:	35%
Hardness:	62 Hv.
Electrical resistivity:	0.016% Ohm mm ² / m
Electrical conductivity:	98% IACS
Temperature range:	-55°C - 155°C
Standards:	AS/NZS 4325.1 ; IEC 61238-1:2003

Product Details and Dimensions



PART NO	STUD HOLE	DIMENSION AUSTRALIAN TYPE								
	E	A	C	D	F	G	H	K	B	J
CT1.5 - 4	4.2	2	4	8	1	4	5	2	7.5	18.5
CT1.5 - 5	5.2	2	4	8	1	4	5	2	7.5	18.5
CT1.5 - 6	6.5	2	4	10	0.8	5	6	2	7.5	20.5
CT2.5 - 4	4.2	2.5	4.4	8	1	4	5	2	8	19
CT2.5 - 5	5.2	2.5	4.4	10	0.8	5	6	2	8	21
CT2.5 - 6	6.5	2.5	4.4	10	0.8	5	6	2	8	21
CT2.5 - 8	8.4	2.5	4.4	11	0.7	6	9	3	8	26
CT 4 - 5	5.2	3.3	5.2	10	1	5	6	2	9	22
CT 4 - 6	6.5	3.3	5.2	10	1	5	6	2	9	22
CT 4 - 8	8.4	3.3	5.2	12	0.8	6	9	2	9	26
CT4 - 10	10.5	3.3	5.2	15	0.8	8	11	4	9	32
CT 6 - 5	5.2	3.8	5.5	10	1.2	5	6	3	10	24
CT 6 - 6	6.5	3.8	5.5	12	1	6	9	3	10	28
CT 6 - 8	8.4	3.8	5.5	12	1	6	9	3	10	28
CT 6 - 10	10.5	3.8	5.5	15	0.8	8	11	3	10	32
CT10 - 5	5.2	4.7	7.1	12	1.8	6	7	4	10	27
CT 10 - 6	6.5	4.7	7.1	12	1.8	6	7	4	10	27
CT 10 - 8	8.4	4.7	7.1	14	1.6	7	8	4	10	29
CT 10 - 10	10.5	4.7	7.1	15	1.5	8	10	4	10	32
CT 10 - 12	13	4.7	7.1	18	1	10	12	6	10	38
CT 16-6	6.5	5.5	7.9	11	2.4	7	7	4	19	37
CT 16 - 8	8.4	5.5	7.9	14	1.7	7	9	4	19	39
CT16 - 10	10.5	5.5	7.9	16	1.5	8	10	4	19	41
CT16 - 12	13	5.5	7.9	18	1.2	10	13	6	19	48
CT 25 - 6	6.5	7.1	9.5	13.5	2.4	7	9	4	21	41
CT 25 - 8	8.4	7.1	9.5	13.5	2.4	7	9	4	21	41
CT 25 - 10	10.5	7.1	9.5	16	1.9	9	10	4	21	44
CT 25 - 12	13	7.1	9.5	18	1.6	10	13	4	21	48
CT35 - 8	8.4	8.4	11.5	16	3	9	10	5	21	45
CT35 - 10	10.5	8.4	11.5	18	2.6	9	10	5	21	45
CT35 - 12	13	8.4	11.5	20	2.2	11	13	5	22	51
CT 50 - 6	6.5	9.5	12.8	18	3.3	9	11	6	22	48
CT 50 - 8	8.4	9.5	12.8	18	3.3	9	11	6	22	48
CT.50 - 10	10.5	9.5	12.8	18	3.3	9	11	6	22	48
CT50 - 12	13	9.5	12.8	21	2.7	11	13	6	22	52
CT 70 - 8	8.4	11.3	14.6	21	3.5	11	13	6	24	54
CT.70 - 10	10.5	11.3	14.6	21	3.5	11	13	6	24	54
CT 70 - 12	13	11.3	14.6	21	3.5	11	13	6	24	54
CT 95 - 8	8.4	13.5	17.4	25	4	12	15	7	26	60
CT.95 - 10	10.5	13.5	17.4	25	4	12	15	7	26	60
CT95 - 12	13	13.5	17.4	25	4	12	15	7	26	60
CT 120 - 8	8.4	15.6	20.6	29	5	12	14	8	30	64
CT.120 - 10	10.5	15.6	20.6	29	5	12	14	8	30	64
CT120 - 12	13	15.6	20.6	29	5	12	14	8	30	64
CT120 - 16	17	15.6	20.6	29	5	15	15	8	30	68

CT150 - 10	10.5	16.7	22.2	31.5	5.8	16	16	9	30	71
CT150 - 12	13	16.7	22.2	31.5	5.8	18	23	9	30	80
CT150 - 16	17	16.7	22.2	31.5	5.8	18	23	9	30	80
CT185 - 10	10.5	18.4	24.2	34.5	5.8	16	16	10	32	74
CT185 - 12	13	18.4	24.2	34.5	5.8	18	23	10	32	83
CT 240 - 0		21.2	28.5	40	7	20	22	12	38	92
CT 240 - 10	10.5	21.2	28.5	40	7	20	22	12	38	92
CT 240 - 12	13	21.2	28.5	40	7	20	22	12	38	92
CT 240 - 16	17	21.2	28.5	40	7	20	22	12	38	92
CT 300 - 0		23.8	31.9	45.5	7.8	23	23	13	42	101
CT 300 - 12	13	23.8	31.9	45.5	7.8	23	23	13	42	101
CT 300 - 16	17	23.8	31.9	45.5	7.8	23	23	13	42	101
CT 400-12	13	26.8	34.9	50	7.7	25	27	18	44	114
CT 500-12	13	30	38.1	55	9	27	29	22	48	124

Subject to change without notice