

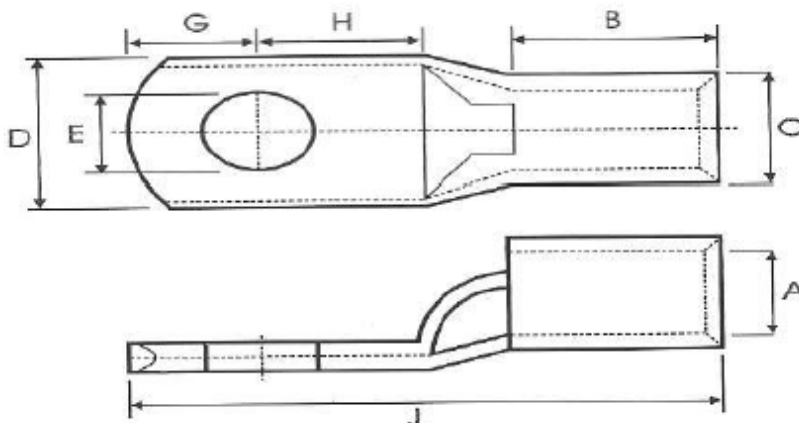
Copper Lugs - Bell Mouth



Specifications

Material:	Oxygen Free High Conductivity Copper <ul style="list-style-type: none"> - Copper 99.90% - Lead 0.005% - Bismuth 0.001%
Coating:	Tin – 5-7 microns
Ultimate tensile strength:	205 N / mm ² Avg
% Elongation:	35%
Hardness:	62 Hv.
Electrical resistivity:	0.016% Ohm mm ² / m
Electrical conductivity:	98% IACS
Temperature range:	-55°C - 155°C
Standards:	AS/NZS 4325.1 ; IEC 61238-1:2003

Product Details and Dimensions



PART NO	STUD HOLE	DIMENSION AUSTRALIAN TYPE								
	E	A	C	D	F	G	H	K	B	J
CT 6 - 5 BM	5.2	3.8	5.5	10	1.2	5	6	3	10	24
CT 6 - 6 BM	6.5	3.8	5.5	12	1	6	9	3	10	28
CT 6 - 8 BM	8.4	3.8	5.5	12	1	6	9	3	10	28
CT 10 - 6 BM	6.5	4.7	7.1	12	1.8	6	7	4	10	27
CT 10 - 8 BM	8.4	4.7	7.1	14	1.6	7	8	4	10	29
CT 10 - 10 BM	10.5	4.7	7.1	15	1.5	8	10	4	10	32
CT 10 - 12 BM	13	4.7	7.1	18	1	10	12	6	10	38
CT 16-6 BM	6.5	5.5	7.9	11	2.4	7	7	4	19	37
CT 16 - 8 BM	8.4	5.5	7.9	14	1.7	7	9	4	19	39
CT 16 - 10 BM	10.5	5.5	7.9	16	1.5	8	10	4	19	41
CT 16 - 12 BM	13	5.5	7.9	18	1.2	10	13	6	19	48
CT 25 - 6 BM	6.5	7.1	9.5	13.5	2.4	7	9	4	21	41
CT 25 - 8 BM	8.4	7.1	9.5	13.5	2.4	7	9	4	21	41
CT 25 - 10 BM	10.5	7.1	9.5	16	1.9	9	10	4	21	44
CT 25 - 12 BM	13	7.1	9.5	18	1.6	10	13	4	21	48
CT 35 - 6BM	6.5	4.7	7.1	12	1.8	6	7	4	10	27
CT 35 - 8 BM	8.4	8.4	11.5	16	3	9	10	5	21	45
CT 35 - 10 BM	10.5	8.4	11.5	18	2.6	9	10	5	21	45
CT 35 - 12 BM	13	8.4	11.5	20	2.2	11	13	5	22	51
CT 50 - 6 BM	6.5	9.5	12.8	18	3.3	9	11	6	22	48
CT 50 - 8 BM	8.4	9.5	12.8	18	3.3	9	11	6	22	48
CT 50 - 10 BM	10.5	9.5	12.8	18	3.3	9	11	6	22	48
CT 50 - 12 BM	13	9.5	12.8	21	2.7	11	13	6	22	52
CT 70 - 6BM	6.5	11.3	14.6	21	3.5	11	13	6	24	54
CT 70 - 8 BM	8.4	11.3	14.6	21	3.5	11	13	6	24	54
CT 70 - 10 BM	10.5	11.3	14.6	21	3.5	11	13	6	24	54
CT 70 - 12 BM	13	11.3	14.6	21	3.5	11	13	6	24	54
CT 70 - 16BM	17	11.3	14.6	28	3	14	20	6	24	54
CT 95 - 6BM	6.5	13.5	17.4	25	4	12	15	7	26	60
CT 95 - 8BM	8.4	13.5	17.4	25	4	12	15	7	26	60
CT 95 - 10BM	10.5	13.5	17.4	25	4	12	15	7	26	60
CT 95 - 12 BM	13	13.5	17.4	25	4	12	15	7	26	60
CT 95 - 16BM	17	13.5	17.4	28	3.5	14	16	8	26	64
CT 120 - 8 BM	8.4	15.6	20.6	29	5	12	14	8	30	64
CT 120 - 10 BM	10.5	15.6	20.6	29	5	12	14	8	30	64
CT 120 - 12 BM	13	15.6	20.6	29	5	12	14	8	30	64
CT 120 - 16 BM	17	15.6	20.6	29	5	15	15	8	30	68
CT 150 - 8BM	8.4	16.7	22.2	31.5	5.8	16	16	9	30	71
CT 150 - 10 BM	10.5	16.7	22.2	31.5	5.8	16	16	9	30	71
CT 150 - 12 BM	13	16.7	22.2	31.5	5.8	18	23	9	30	80
CT 150 - 16 BM	17	16.7	22.2	31.5	5.8	18	23	9	30	80
CT 185 - 0BM		18.4	24.2	34.5	5.8	16	16	10	32	74
CT 185 - 10 BM	10.5	18.4	24.2	34.5	5.8	16	16	10	32	74
CT 185 - 12 BM	13	18.4	24.2	34.5	5.8	18	23	10	32	83
CT 240 - 0 BM		21.2	28.5	40	7	20	22	12	38	92
CT 240 - 10 BM	10.5	21.2	28.5	40	7	20	22	12	38	92
CT 240 - 12 BM	13	21.2	28.5	40	7	20	22	12	38	92
CT 240 - 16 BM	17	21.2	28.5	40	7	20	22	12	38	92

CT 300 - 0 BM		23.8	31.9	45.5	7.8	23	23	13	42	101
CT 300 - 10BM	10.5	23.8	31.9	45.5	7.8	23	23	13	42	101
CT 300 - 12BM	13	23.8	31.9	45.5	7.8	23	23	13	42	101

CT 400 - 0BM		26.8	34.9	50	7.7	25	27	18	44	114
CT 400-10 BM	10.5	26.8	34.9	50	7.7	25	27	18	44	114
CT 400-12 BM	13	26.8	34.9	50	7.7	25	27	18	44	114
CT 400-16 BM	17	26.8	34.9	50	7.7	25	27	18	44	114

CT 500-12 BM	13	30	38.1	55	9	27	29	22	48	124
---------------------	----	----	------	----	---	----	----	----	----	-----

CT 630 - 12 BM	13	34	44	64	10	27	29	22	56	134
-----------------------	----	----	----	----	----	----	----	----	----	-----

Subject to change without notice