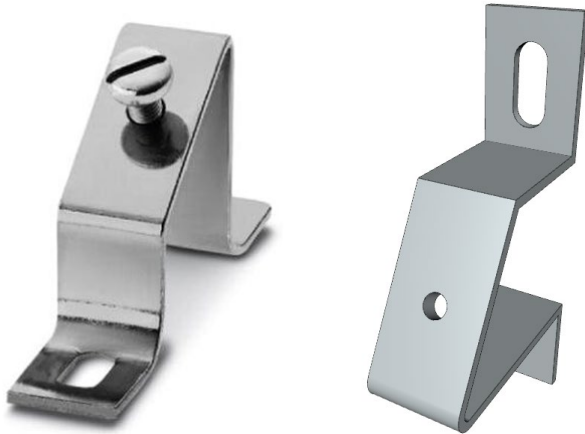


Din Rail Bracket

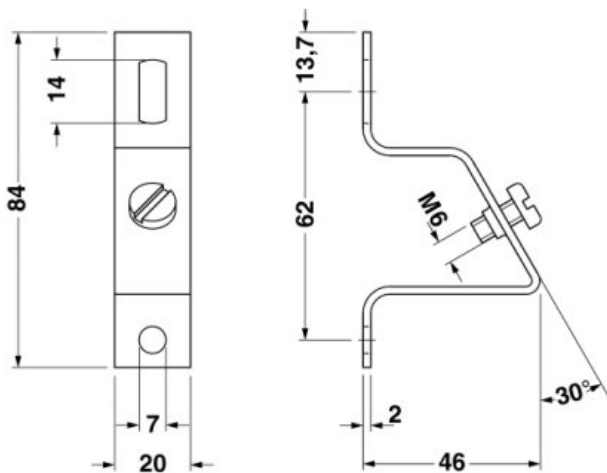
Specifications

- Angled brackets with M6 screw, for fixing DIN rails at an angle of 30°
- Colour: Silver
- Material: Steel
- Coating: Galvanised, passivated with a thick layer
- 30° tilt angle
- Brackets can be used to fix DIN rails at a distance from the mounting surface
- RoHS compliant
- Weight per piece (excluding packaging): 48.8g
- Country of Origin: Germany (DE)
- Pack quantity applies – 10 pc per pack

Product Images



Product Dimensions & Details



Part No.	Description	Pack Qty	Width (mm)	Height (mm)	Length (mm)
1201099	30° Angle Brackets with M6 screw	10	20	46	84

Subject to change without notice