

Moulded Case Switch

Features & Specifications

- Capable of switching electric circuits with load (load make, load break)
- Provides function of Isolation
- Rated Current (A): 250
- Short time withstand current (Ka) for 1 sec = (12 x rated current)
- Rated Voltage: AC 380-415V
- No. Poles: 3
- Rated Insulation Voltage: 600 VAC
- Impulse Withstand Voltage: 2500V
- Connection Torque: 8.8 – 10.8Nm
- Operating Temp: -5°C to +60°C
- Connection type: Cable, Busbar
- Cable size: 70 – 120mm
- Installation: Chassis/panel mount
- Weight: 2.30KG
- IP Rating: IP20
- Standards: IEC 60947-3
- Ith rating – 250A at 50°C
- Utilization category- AC22B
- Icm ratings- 4250A Peak
- Pollution degree- 3
- Power dissipation value/watt loss: – 57Watts

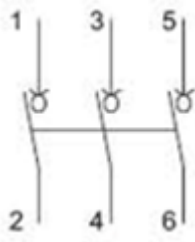
Product Images



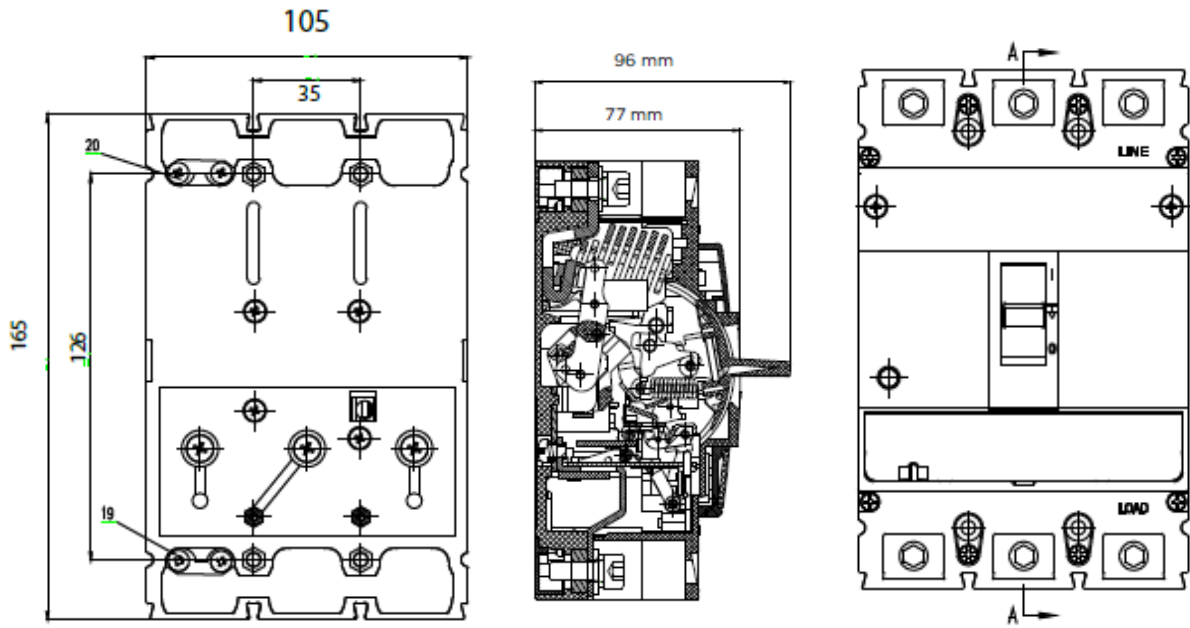
Product Details

Part No.	A	V	Poles
MCS250	250	AC 380-415V	3 Pole

Wiring Diagram



Dimension Diagrams



Dimensions are in mm

Escutcheon Cutout Size

