

Earth & Neutral Bars – 250A – Top Feed Range

Specifications

Material: Brass

Height: 16mm

Width: 19mm

250A rated

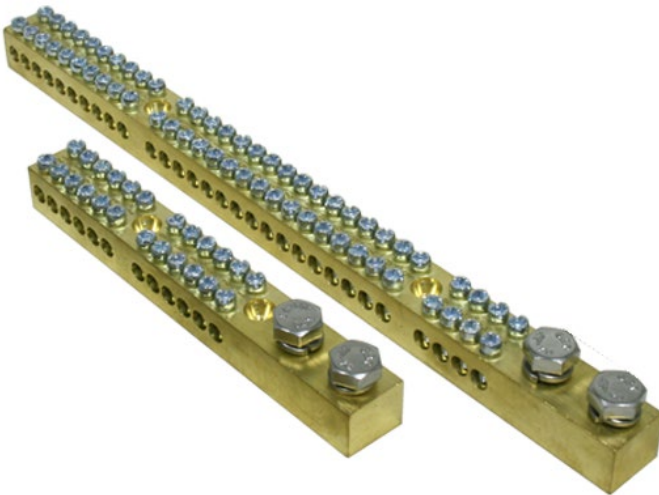
2 x M8 bolts for mains cable fixing

2 x screws per tunnel – accepts up to 16.0mm² cables

Tunnel screws rounded on bottom to prevent damaging conductor

Standard numbering

Product Image

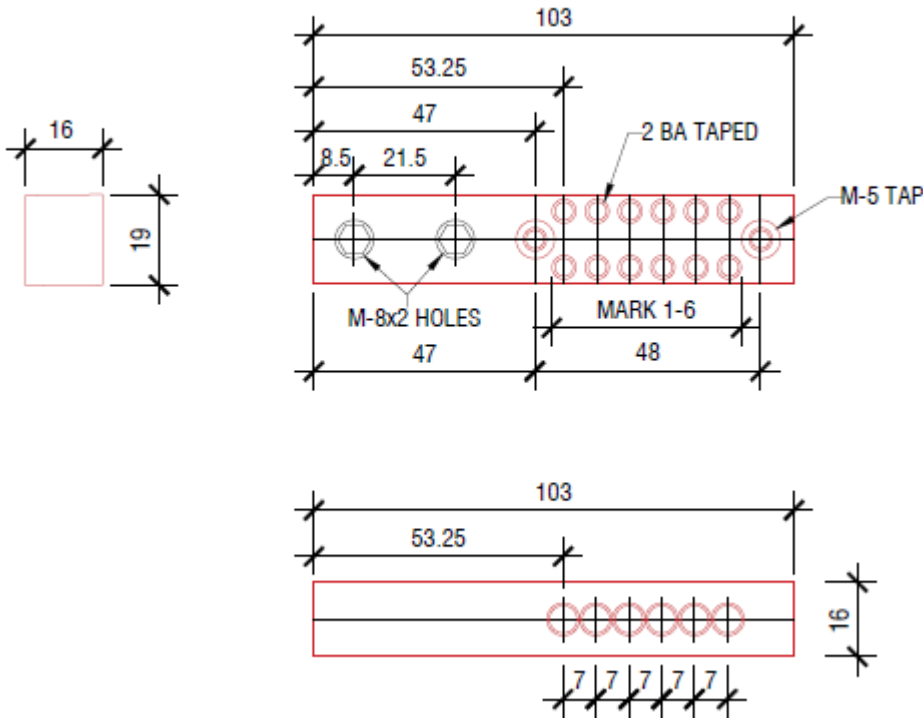


Product Details

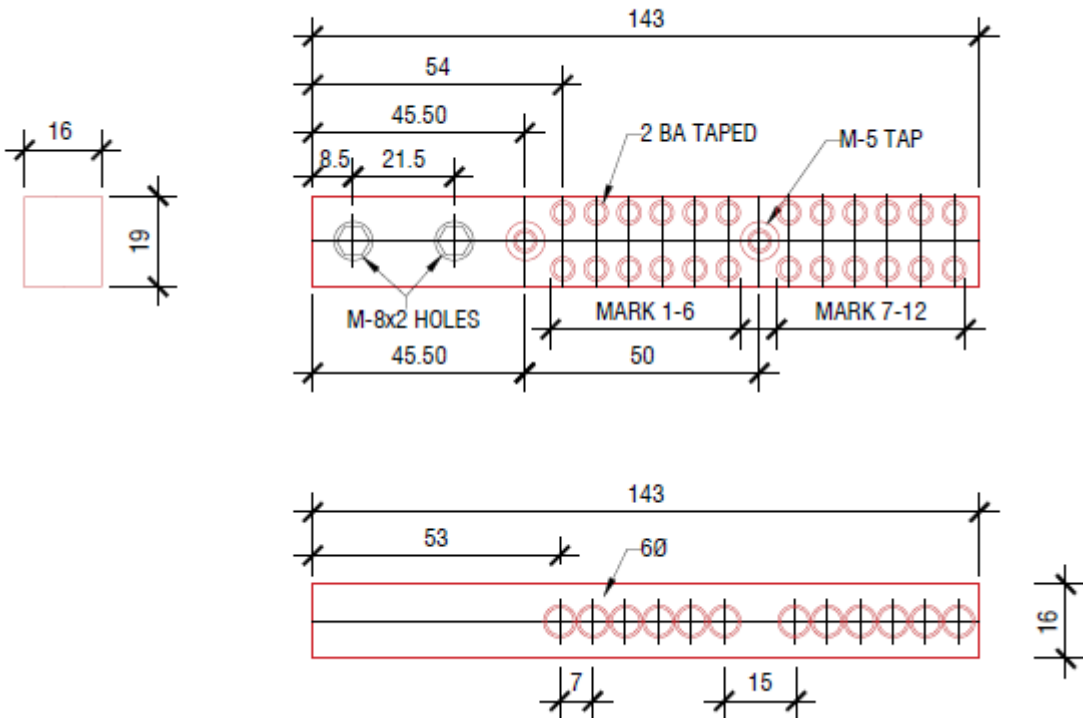
Part No.	Ways	Length (mm)	Numbering Type	Numbers
ENBTF206	6	103	STANDARD	1-6
ENBTF212	12	143	STANDARD	1-12
ENBTF218	18	185	STANDARD	1-18
ENBTF224	24	227	STANDARD	1-24
ENBTF230	30	269	STANDARD	1-30
ENBTF236	36	311	STANDARD	1-36
ENBTF242	42	353	STANDARD	1-42
ENBTF248	48	394.5	STANDARD	1-48
ENBTF260	60	499	STANDARD	1-60
ENBTF272	72	576	STANDARD	1-72
ENBTF284	84	668	STANDARD	1-84

Product Dimensions

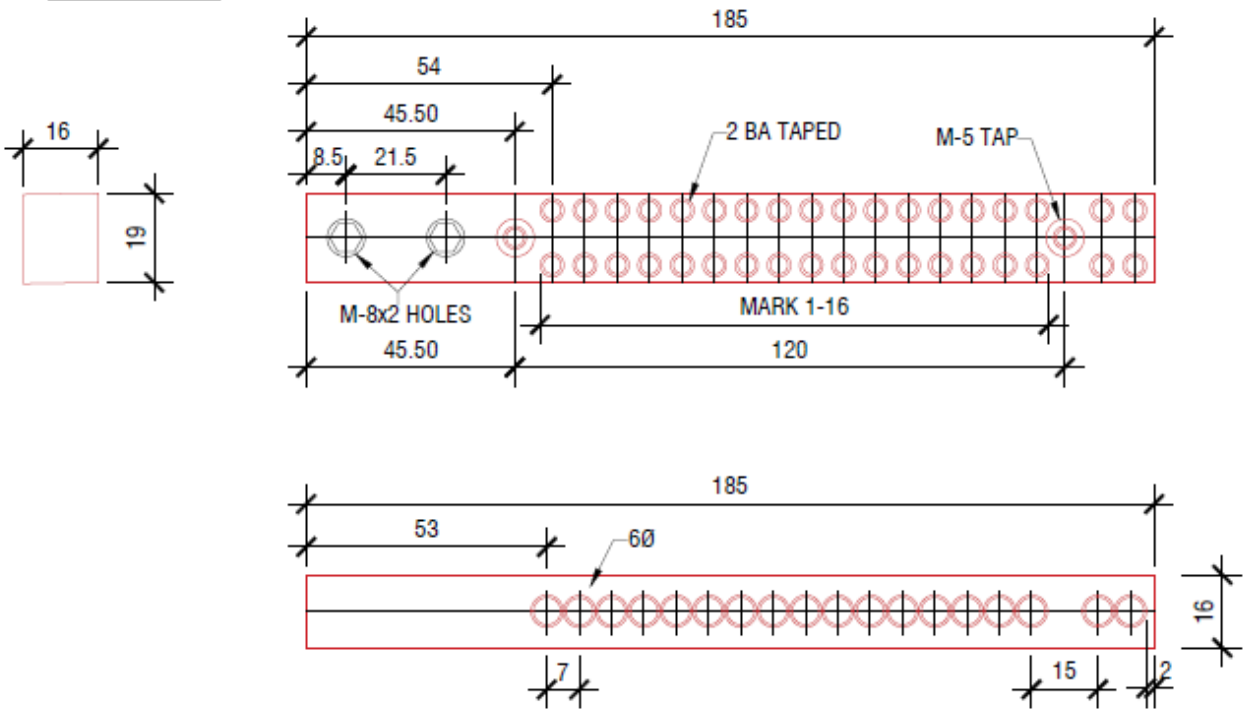
ENBTF206



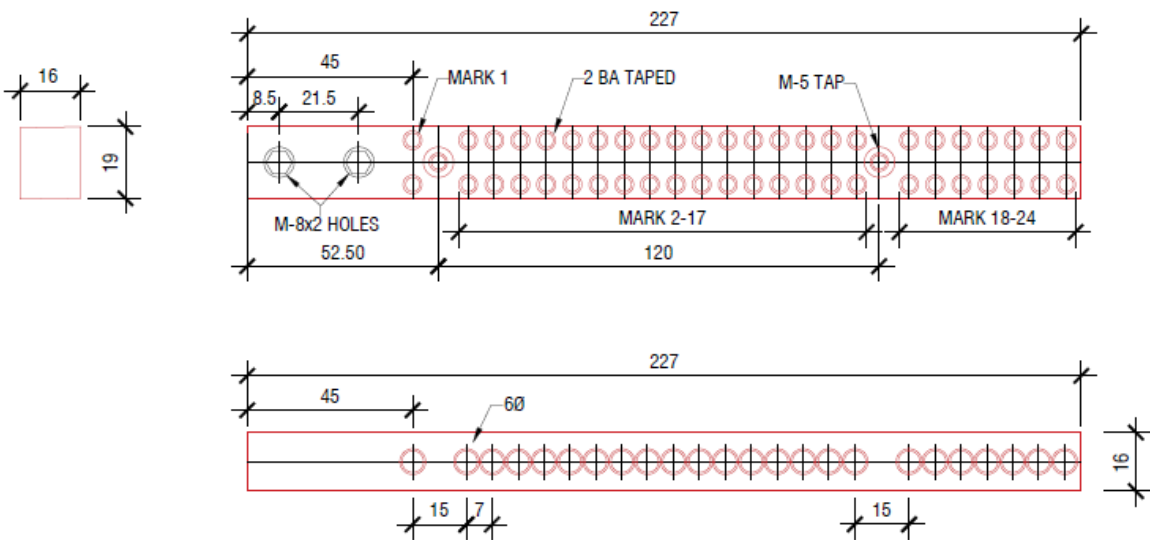
ENBTF212



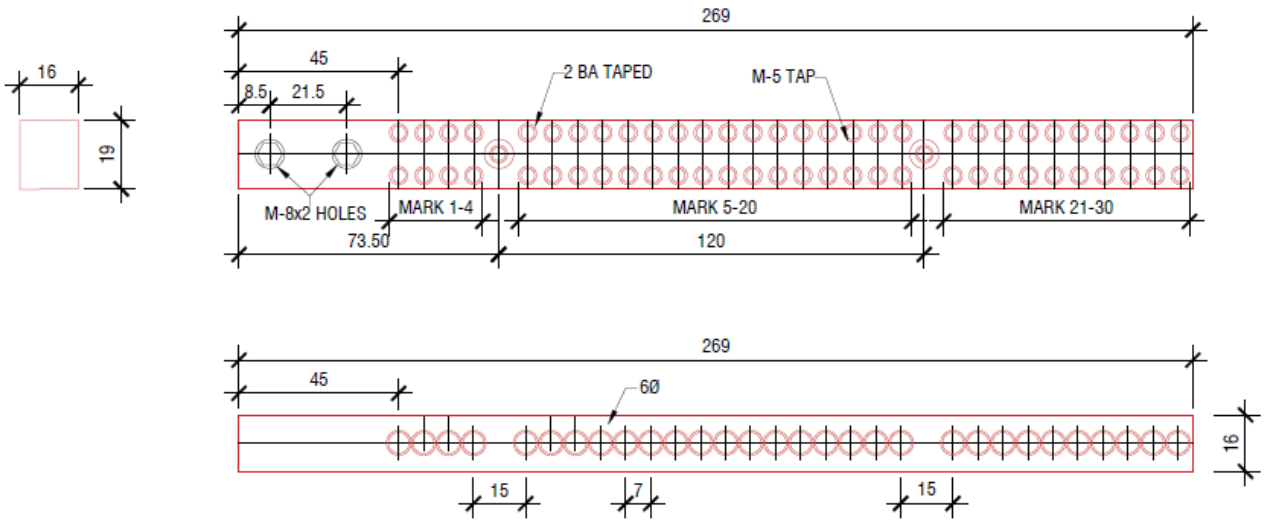
ENBTF218



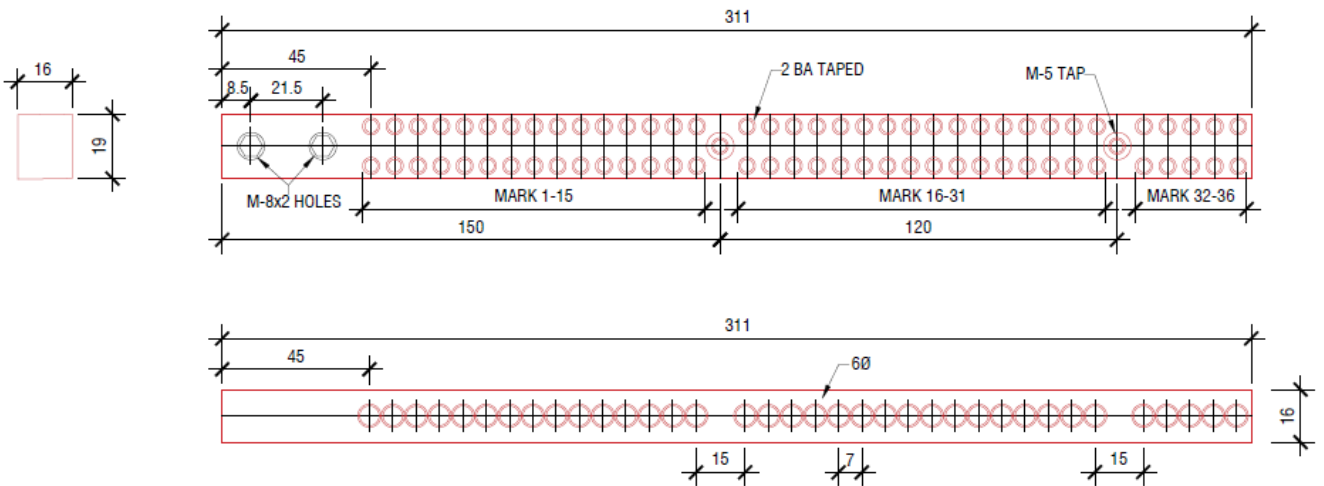
ENBTF224



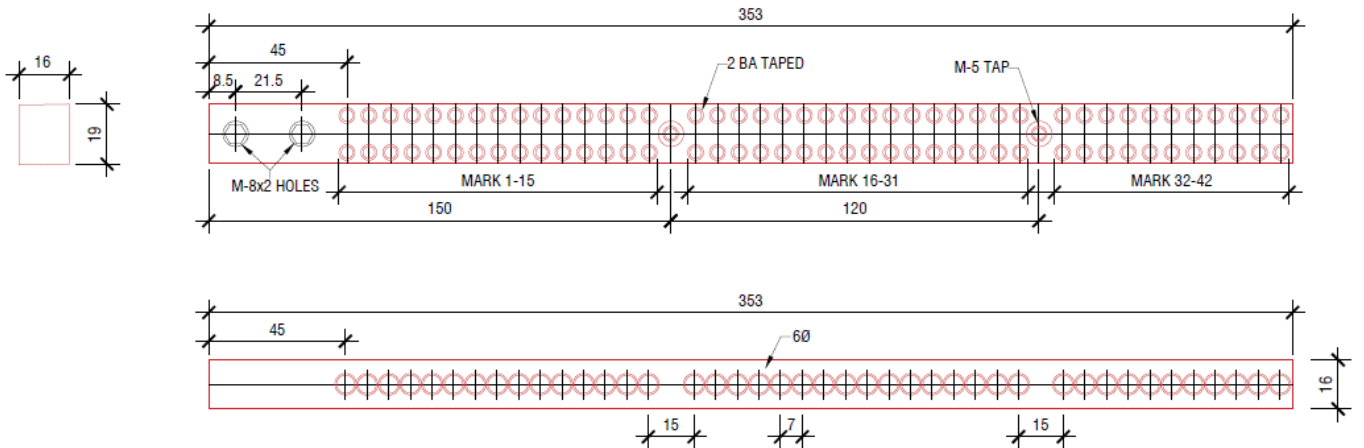
ENBTF230



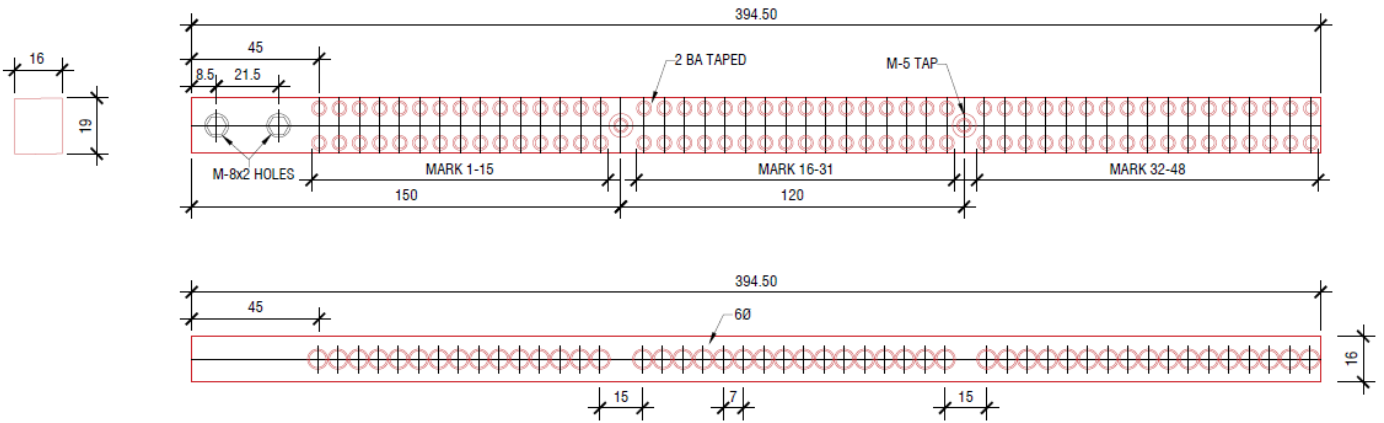
ENBTF236



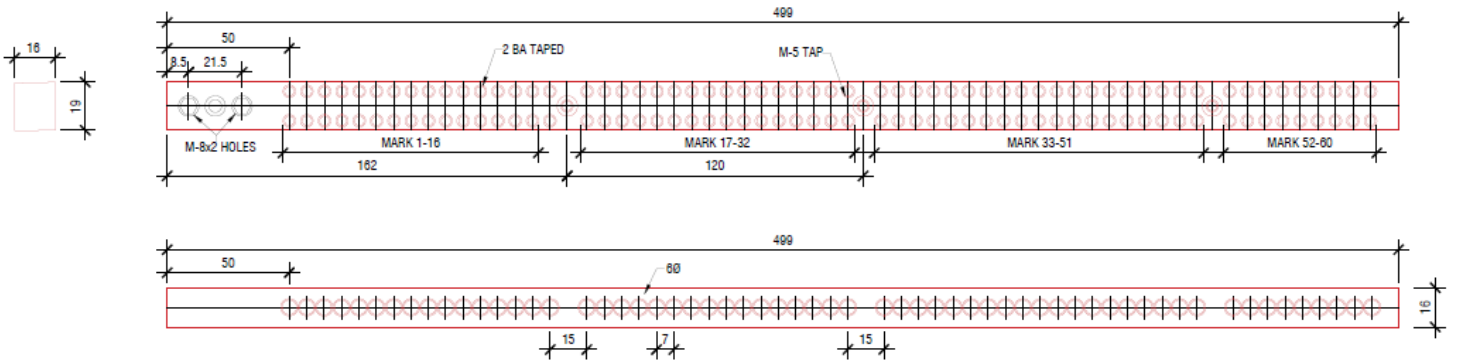
ENBTF242



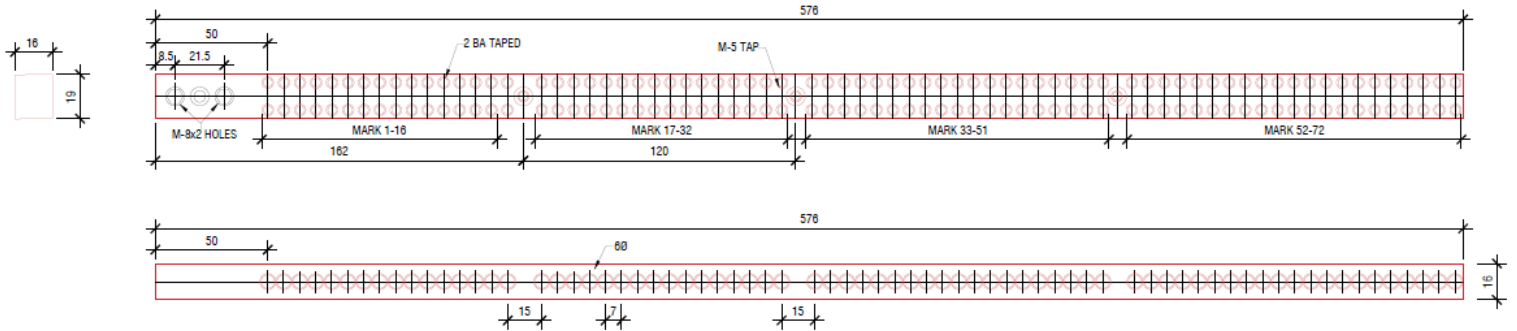
ENBTF248



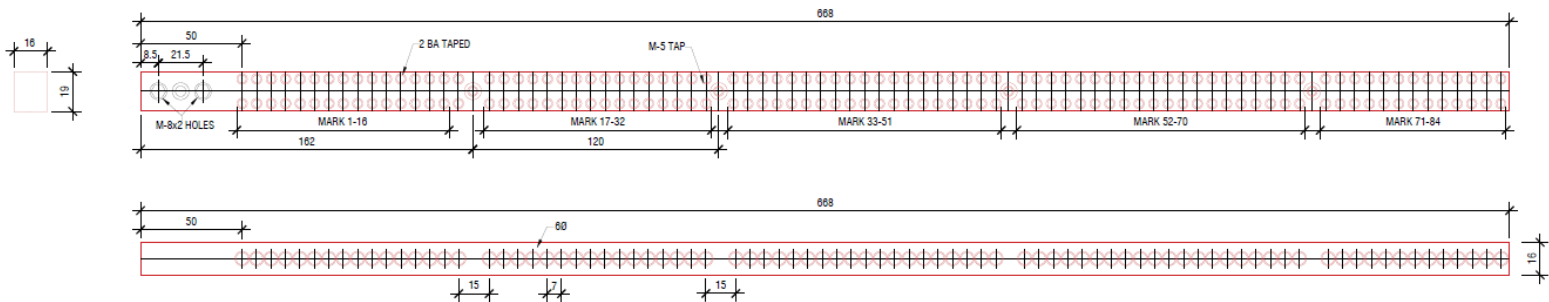
ENBTF260



ENBTF272



ENBTF284



*Dimension diagrams are available in a larger format - should you require these, please contact us.