

Earth & Neutral Bars – 250A – Universal Feed Range

Specifications

Material: Brass

Height: 16mm

Width: 19mm

250A rated

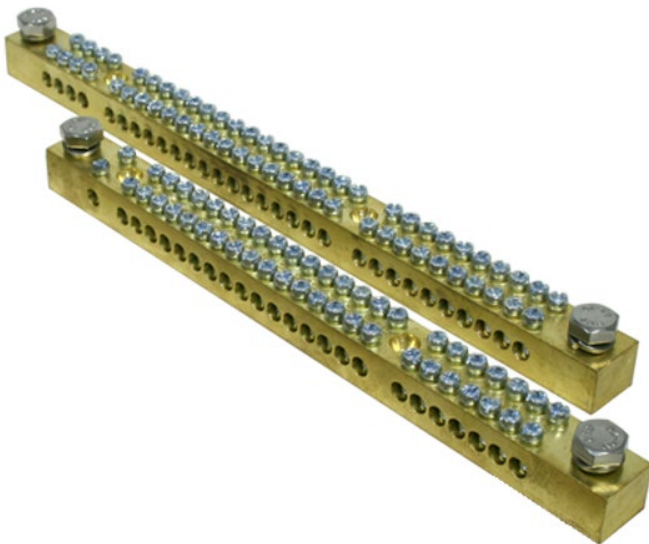
2 x M8 bolts for mains cable fixing

2 x screws per tunnel – accepts up to 16.0mm² cables

Tunnel screws rounded on bottom to prevent damaging conductor

Standard numbering

Product Image

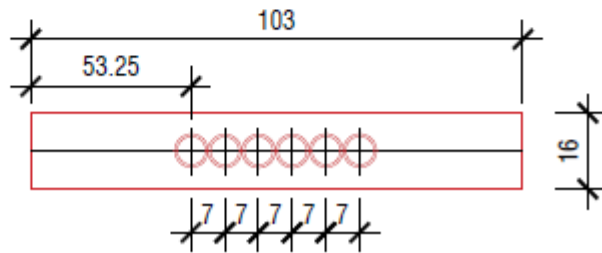
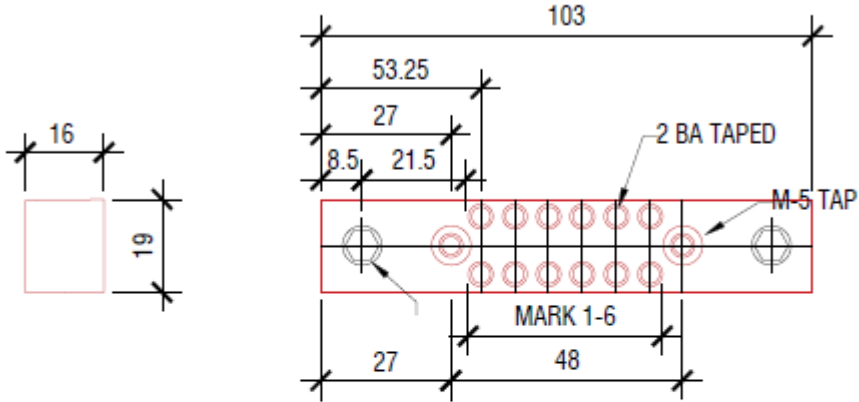


Product Details

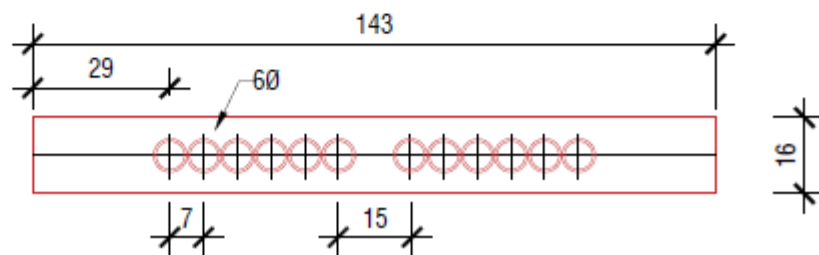
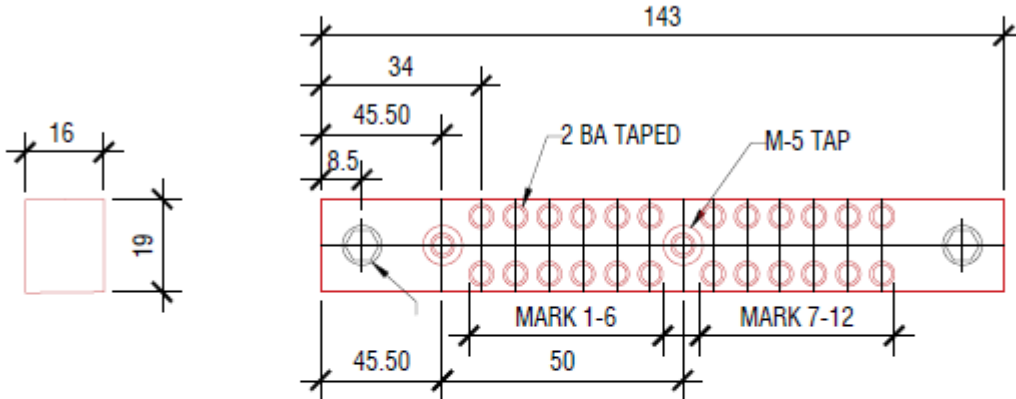
Part No.	Ways	Length (mm)	Numbering Type	Numbers
ENBUF206	6	103	STANDARD	1-6
ENBUF212	12	143	STANDARD	1-12
ENBUF218	18	185	STANDARD	1-18
ENBUF224	24	227	STANDARD	1-24
ENBUF230	30	269	STANDARD	1-30
ENBUF236	36	311	STANDARD	1-36
ENBUF242	42	353	STANDARD	1-42
ENBUF248	48	394.5	STANDARD	1-48
ENBUF260	60	499	STANDARD	1-60
ENBUF272	72	576	STANDARD	1-72
ENBUF284	84	668	STANDARD	1-84

Product Dimensions

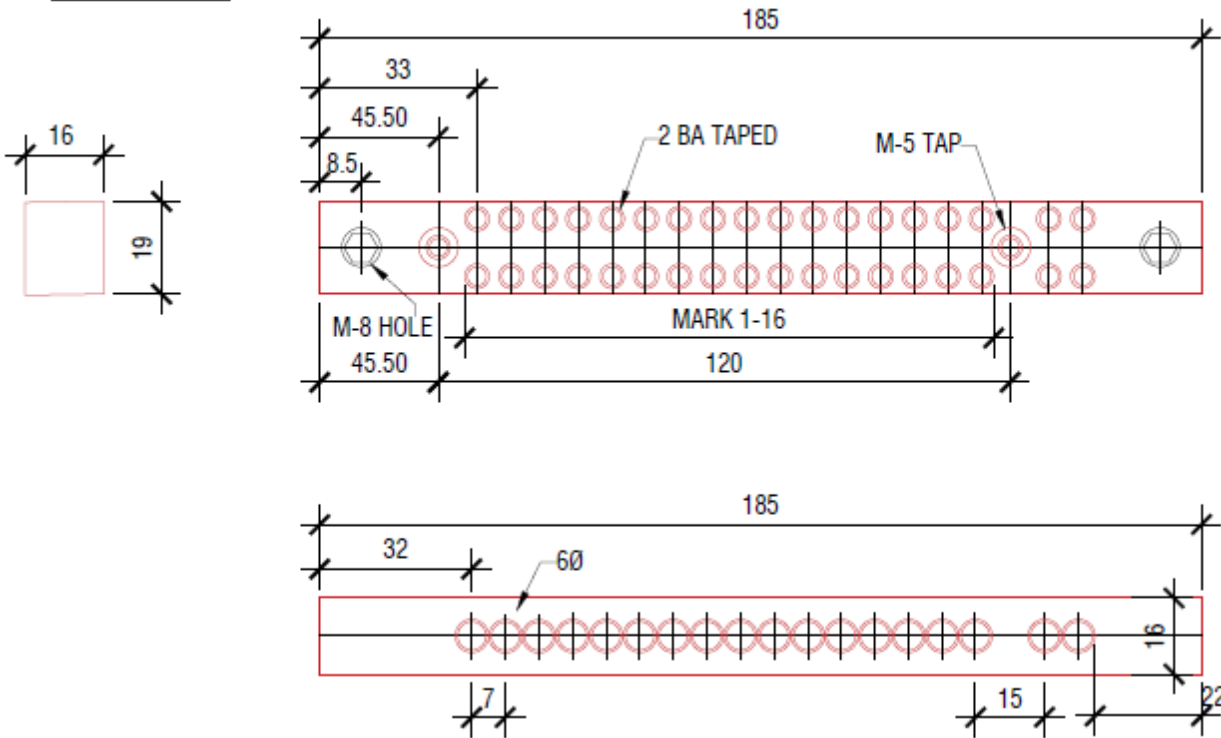
ENBUF206



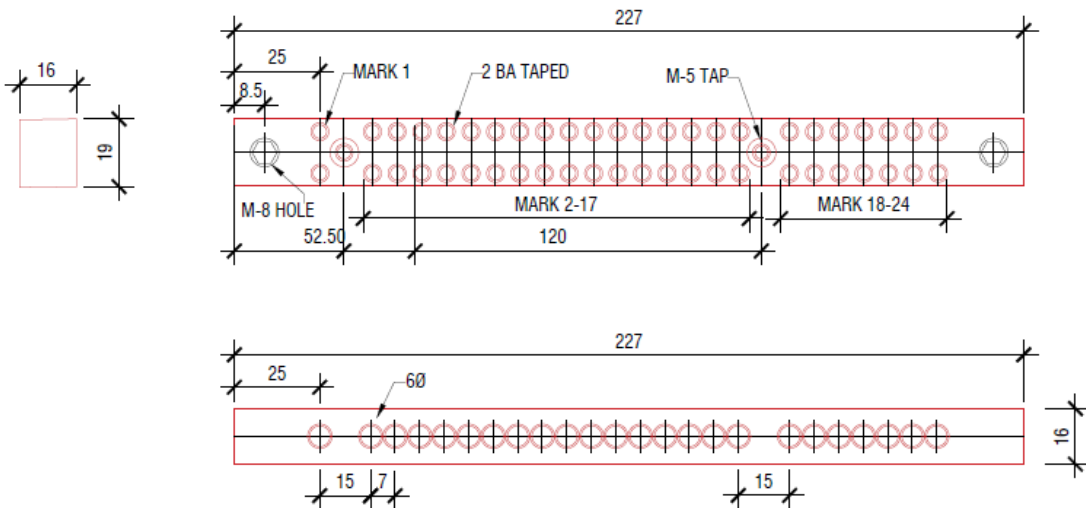
ENBUF212



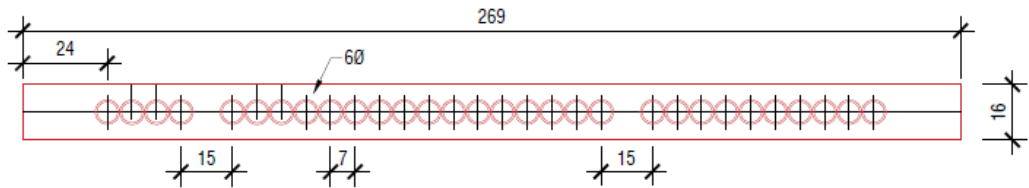
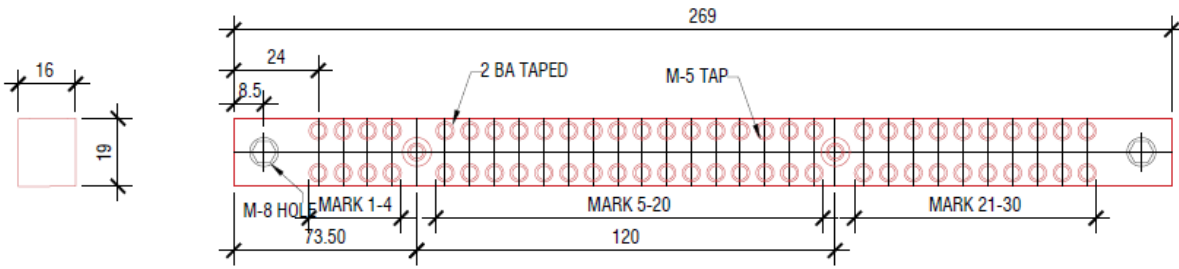
ENBUF218



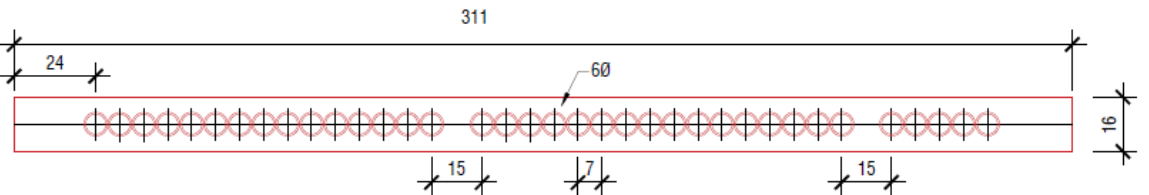
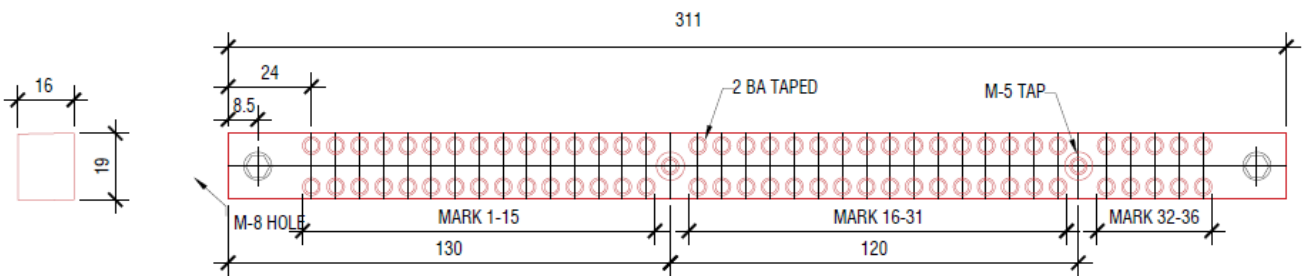
ENBUF224



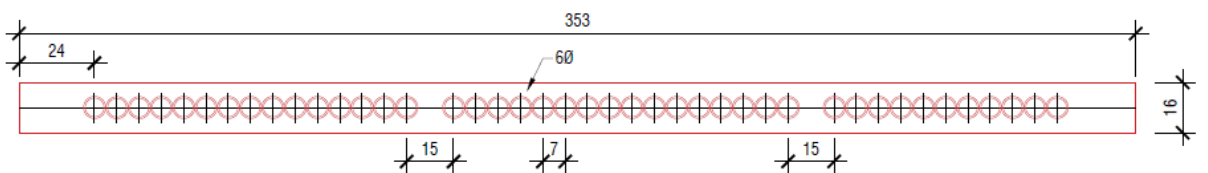
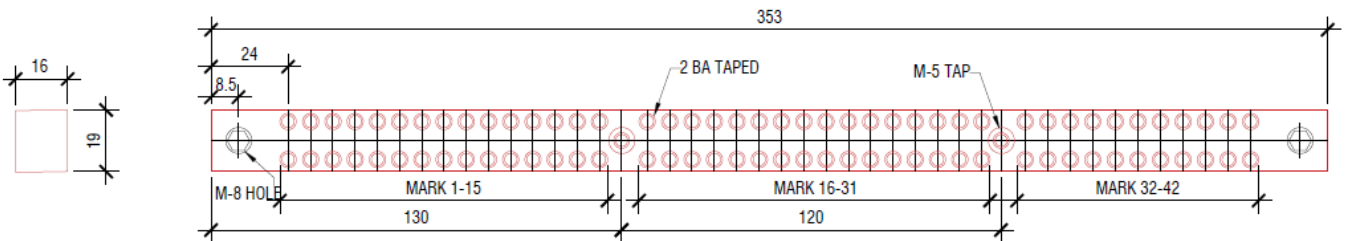
ENBUF230



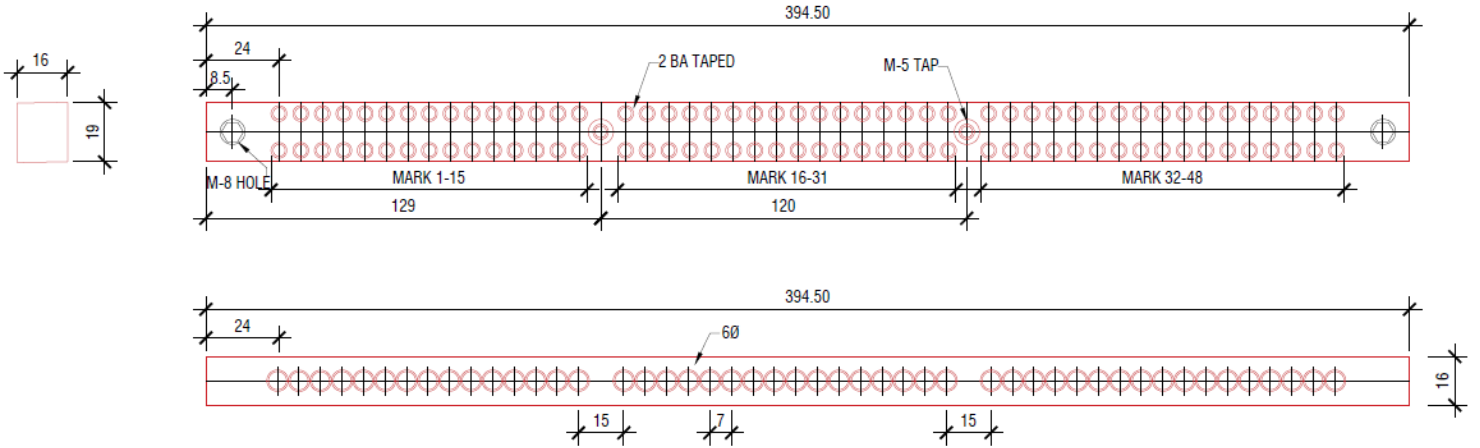
ENBUF236



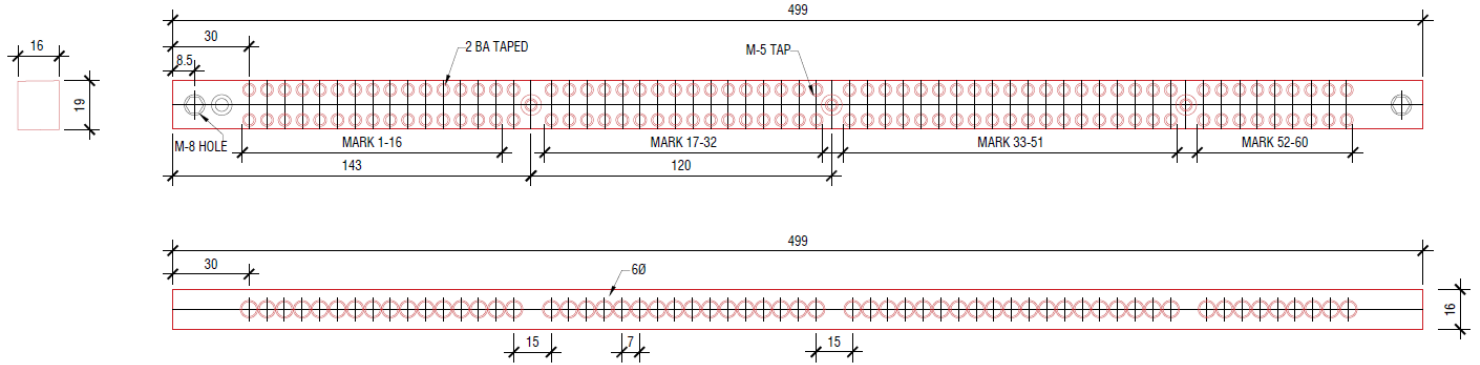
ENBUF242



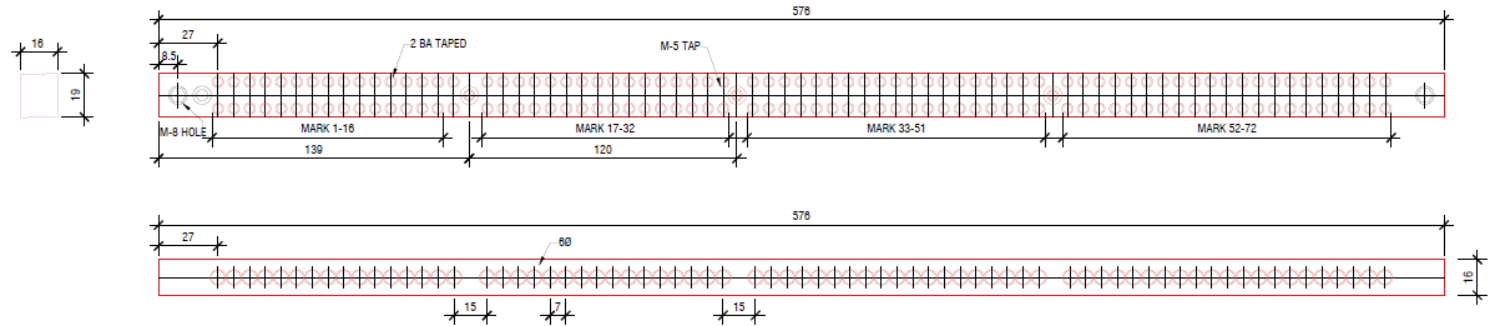
ENBUF248



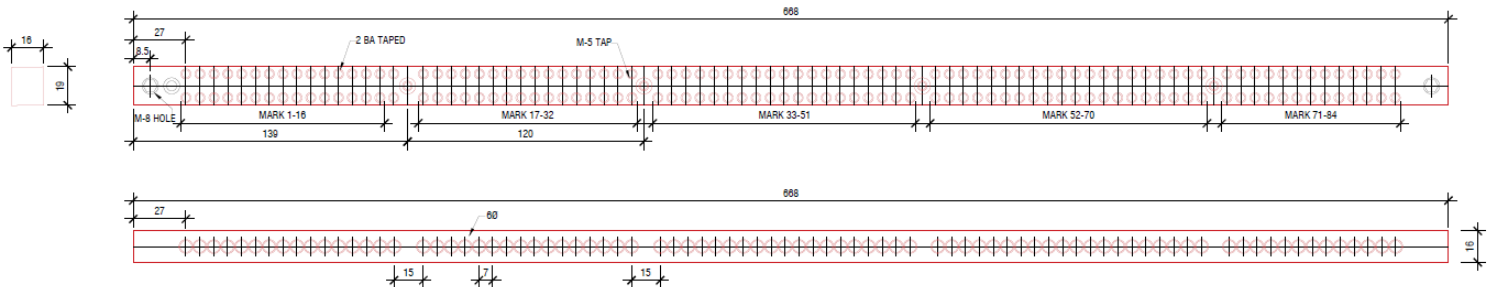
ENBUF260



ENBUF272



ENBUF284



*Dimension diagrams are available in a larger format - should you require these, please contact us.