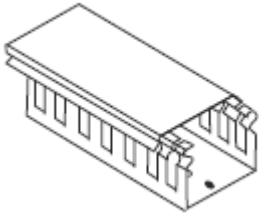
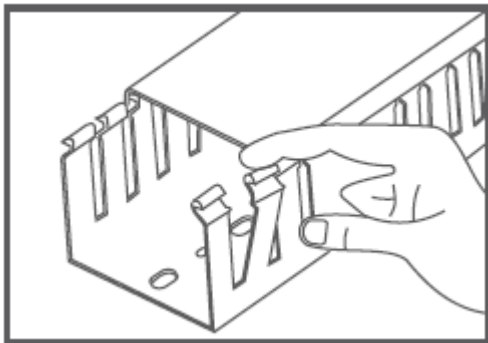


PVC Slotted Duct - Standard

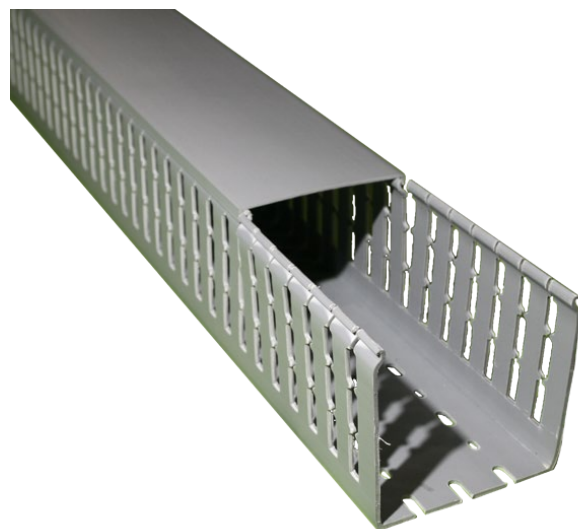


Specifications

- Material: Low smoke, flame retarded (V0), high impact rigid polyvinyl chloride (RPVC) resin
- Flammability Rating: V0, REACH, ROHS
- Resistance to heat in continuous use: up to 60°C
- Colour: Grey RAL7030
- Length: 2 meters
- Supplied with lids
- Snap-off side wall fingers permit enlarging slot for any size of wire/bundles - no tools required for cutting.

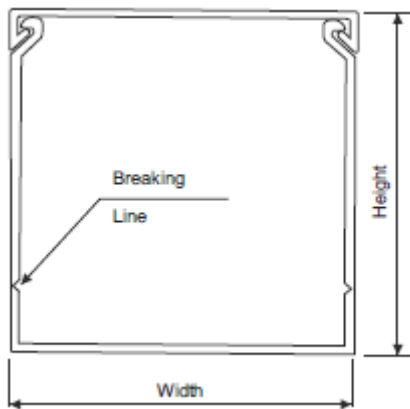


Product Images



Product Details

| Part No. | Duct with cover width x Height in (mm) | Cablehousing Capacity (Nos) | | | Box Qty | Bottom Slot |
|-----------|--|---|---|---|---------|-------------|
| | | 1.5 mm ² OD 3.18 mm (16 AWG) | 2.5 mm ² OD 3.53 mm (14 AWG) | 4 mm ² OD 4.01 mm (12 AWG) | | |
| SSD2525 | 25 x 25 | 30 | 25 | 19 | 48 | B1 |
| SSD2540 | 25 x 40 | 48 | 39 | 31 | 36 | B1 |
| SSD2560 | 25 x 60 | 72 | 57 | 45 | 18 | B1 |
| SSD2580 | 25 x 80 | 92 | 75 | 59 | 18 | B1 |
| SSD4040 | 40 x 40 | 81 | 65 | 51 | 18 | B2 |
| SSD4060 | 40 x 60 | 121 | 98 | 77 | 18 | B2 |
| SSD4080 | 40 x 80 | 160 | 130 | 102 | 18 | B2 |
| SSD40100 | 40 x 100 | 200 | 164 | 128 | 12 | B2 |
| SSD6060 | 60 x 60 | 180 | 146 | 114 | 12 | B2 |
| SSD6080 | 60 x 80 | 246 | 199 | 156 | 12 | B2 |
| SSD60100 | 60 x 100 | 308 | 247 | 194 | 8 | B2 |
| SSD8060 | 80 x 60 | 251 | 203 | 159 | 12 | B3 |
| SSD8080 | 80 x 80 | 337 | 272 | 214 | 12 | B3 |
| SSD80100 | 80 x 100 | 416 | 332 | 248 | 8 | B3 |
| SSD10080 | 100 x 80 | 425 | 344 | 270 | 8 | B3 |
| SSD100100 | 100 x 100 | 531 | 429 | 336 | 8 | B3 |



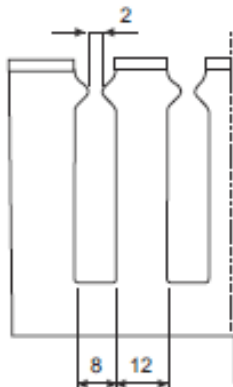
Test Results

| Test | Test Purpose | Test Standard | Criteria | Typical Values |
|------------------------------------|---|---------------|----------|----------------|
| Limiting Oxygen index (LOI) | Minimum Oxygen concentration for supporting combustion of wiring duct insulation at normal temperature | ASTM D 2863 | Min. 29 | Min. 40 |
| Temperature index | Temperature Index at which normal Oxygen content (21%) of Air will support combustion of wiring duct material | ASTM D 2863 | >200°C | >200°C |
| Maximum Smoke density rating (SDR) | Indicates the visibility under fire | ASTM D 2843 | < 60% | < 45% |
| Flammability class | Should be highly Flame retardant | UL - 94 | V-0 | Passed |

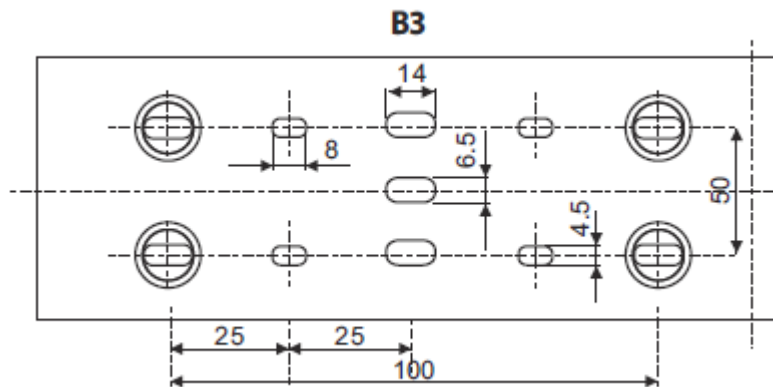
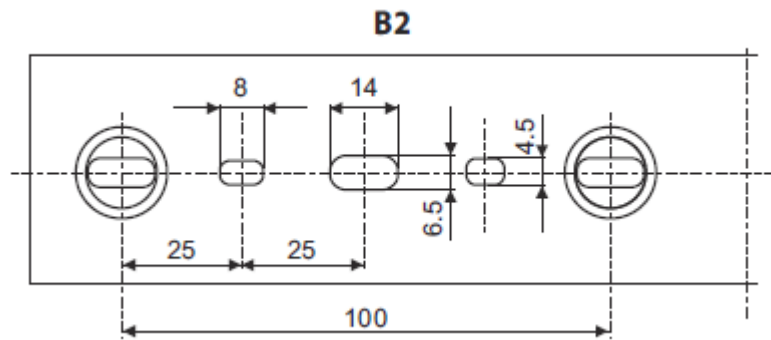
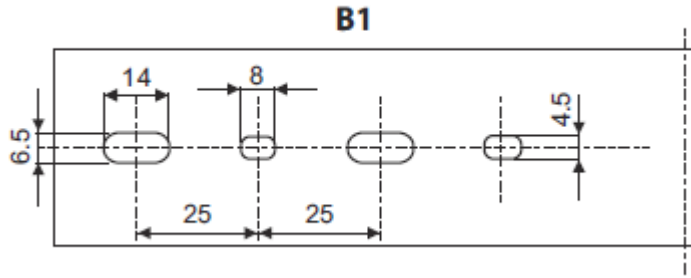
Raw Material Specifications

| Properties | Units | Test Standard | Typical values |
|--|--------------------|---------------|-----------------------|
| General Characteristics | | | |
| Specific gravity | g/cc | ASTM D 792 | < 1.48 |
| Heat Deflection temperature (HDT) @18.2Mpa | °F | ASTM D 648 | Up to 160 |
| Vicat softening point (VSP) at 5 Kg load | °F | ASTM D 1525 | Up to 185 |
| Water absorption | % | ASTM D 570 | 0.045 |
| Hardness – Shore | D | D ASTM D 2240 | Max. 78 |
| Burning Characteristics | | | |
| Flammability class | - | UL - 94 | V-0 |
| Oxygen index test (LOI) | % | ASTM D 2863 | Min. 40 |
| Maximum Smoke density rating (SDR) | % | ASTM D 2843 | < 50 |
| Mechanical Characteristics | | | |
| Tensile modulus | Kg/cm ² | ASTM D 638 | >12000 |
| Tensile strength at break | Kg/cm ² | ASTM D 638 | >390 |
| Izod impact strength (Notched) | Kg.cm/cm | ASTM D 256 | >7.0 |
| Compressive strength | Kg/cm ² | ASTM D 695 | >1100 |
| Electrical Characteristics | | | |
| Power factor | - | ASTM D 150 | 0.018 |
| Dielectric constant | - | ASTM D 150 | < 3 |
| Dielectric strength | KV/mm | ASTM D 149 | > 12 |
| Surface resistivity | Ohm | ASTM D 257 | >1 x 10 ¹⁵ |
| Volume resistivity | Ohm - cm | ASTM D 257 | >3 x 10 ¹⁶ |

Slotting Dimensions - Side



Slotting Dimensions - Bottom



All dimensions are in mm

Subject to change without notice