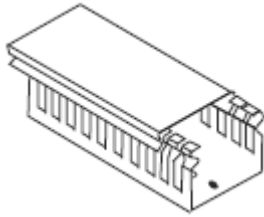
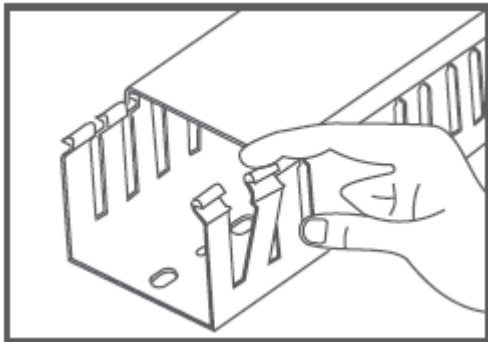


PVC Slotted Duct - Narrow



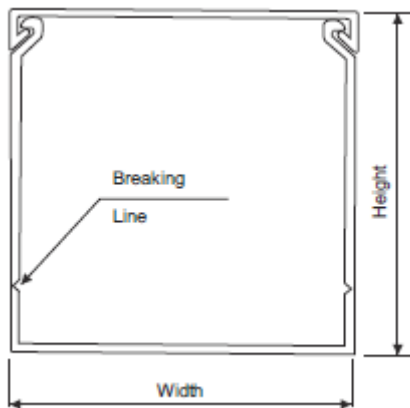
Specifications

- Material: Low smoke, flame retarded (V0), high impact rigid polyvinyl chloride (RPVC) resin
- Flammability Rating: V0, REACH, ROHS
- Resistance to heat in continuous use: up to 60°C
- Colour: Grey RAL7030
- Narrow Finger 7.6mm
- Length: 2 meters
- Supplied with lids
- Snap-off side wall fingers permit enlarging slot for any size of wire/bundles - no tools required for cutting.



Product Details

Part No.	Duct with cover width x Height in (mm)	Cablehousing Capacity (Nos)			Box Qty
		1.5 mm ² OD 3.18 mm (16 AWG)	2.5 mm ² OD 3.53 mm (14 AWG)	4 mm ² OD 4.01 mm (12 AWG)	
NSD2525	25 x 25	30	25	19	48
NSD2540	25 x 40	48	39	31	36
NSD2560	25 x 60	72	57	45	18
NSD2580	25 x 80	92	75	59	18
NSD4040	40 x 40	81	65	51	18
NSD4060	40 x 60	121	98	77	18
NSD4080	40 x 80	160	130	102	18
NSD40100	40 x 100	200	164	128	12
NSD6060	60 x 60	180	146	114	12
NSD6080	60 x 80	246	199	156	12
NSD60100	60 x 100	308	247	194	8
NSD8060	80 x 60	251	203	159	12
NSD8080	80 x 80	337	272	214	12
NSD80100	80 x 100	416	332	248	8
NSD10080	100 x 80	425	344	270	8
NSD100100	100 x 100	531	429	336	8



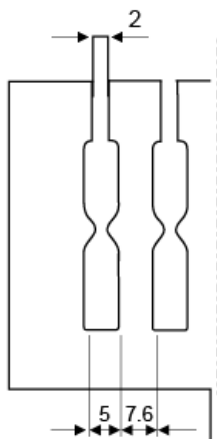
Test Results

Test	Test Purpose	Test Standard	Criteria	Typical Values
Limiting Oxygen index (LOI)	Minimum Oxygen concentration for supporting combustion of wiring duct insulation at normal temperature	ASTM D 2863	Min. 29	Min. 40
Temperature index	Temperature Index at which normal Oxygen content (21%) of Air will support combustion of wiring duct material	ASTM D 2863	>200°C	>200°C
Maximum Smoke density rating (SDR)	Indicates the visibility under fire	ASTM D 2843	< 60%	< 45%
Flammability class	Should be highly Flame retardant	UL - 94	V-0	Passed

Raw Material Specifications

Properties	Units	Test Standard	Typical values
General Characteristics			
Specific gravity	g/cc	ASTM D 792	< 1.48
Heat Deflection temperature (HDT) @18.2Mpa	°F	ASTM D 648	Up to 160
Vicat softening point (VSP) at 5 Kg load	°F	ASTM D 1525	Up to 185
Water absorption	%	ASTM D 570	0.045
Hardness – Shore	D	D ASTM D 2240	Max. 78
Burning Characteristics			
Flammability class	-	UL - 94	V-0
Oxygen index test (LOI)	%	ASTM D 2863	Min. 40
Maximum Smoke density rating (SDR)	%	ASTM D 2843	< 50
Mechanical Characteristics			
Tensile modulus	Kg/cm ²	ASTM D 638	>12000
Tensile strength at break	Kg/cm ²	ASTM D 638	>390
Izod impact strength (Notched)	Kg.cm/cm	ASTM D 256	>7.0
Compressive strength	Kg/cm ²	ASTM D 695	>1100
Electrical Characteristics			
Power factor	-	ASTM D 150	0.018
Dielectric constant	-	ASTM D 150	< 3
Dielectric strength	KV/mm	ASTM D 149	> 12
Surface resistivity	Ohm	ASTM D 257	>1 x 10 ¹⁵
Volume resistivity	Ohm - cm	ASTM D 257	>3 x 10 ¹⁶

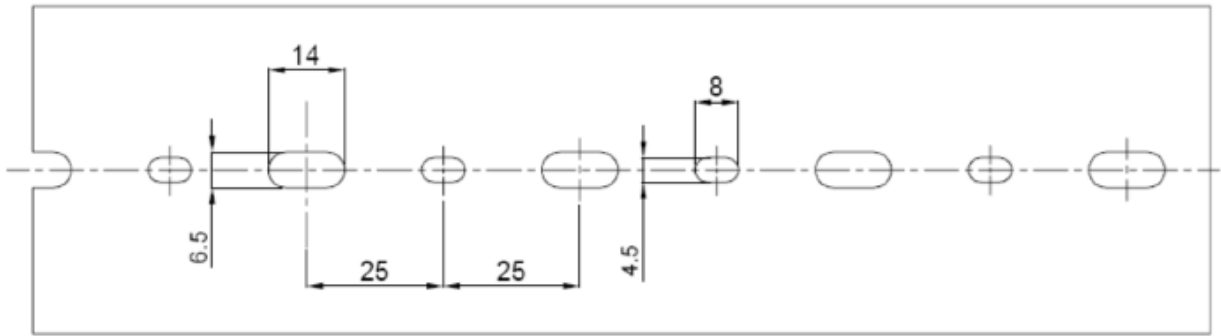
Slotting Dimensions – Side



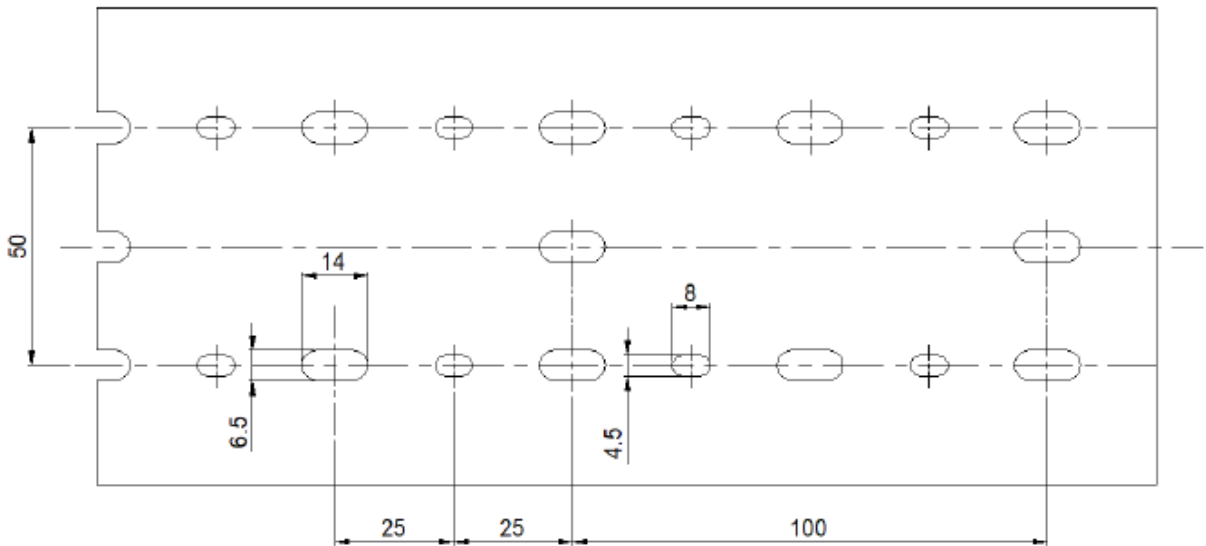
Dimensions are +/- 1mm

Slotting Dimensions - Bottom

25mm, 40mm & 60mm



80mm & 100mm



All dimensions are in mm

Subject to change without notice