

Weatherproof Isolator

Features

- Switch mounted in Polycarbonate enclosure.
- Switch rear-mounted for easy connection.
- Degree of protection: IP66 (AS 60529 IP rating)
- Tested and certified as per AS: 60947-3, AS/NZS: 3133 & IEC/EN:60947-3.
- Enclosure Base and cover colour: RAL7047, Operating Knob: RAL7047

Product Images



Product Details

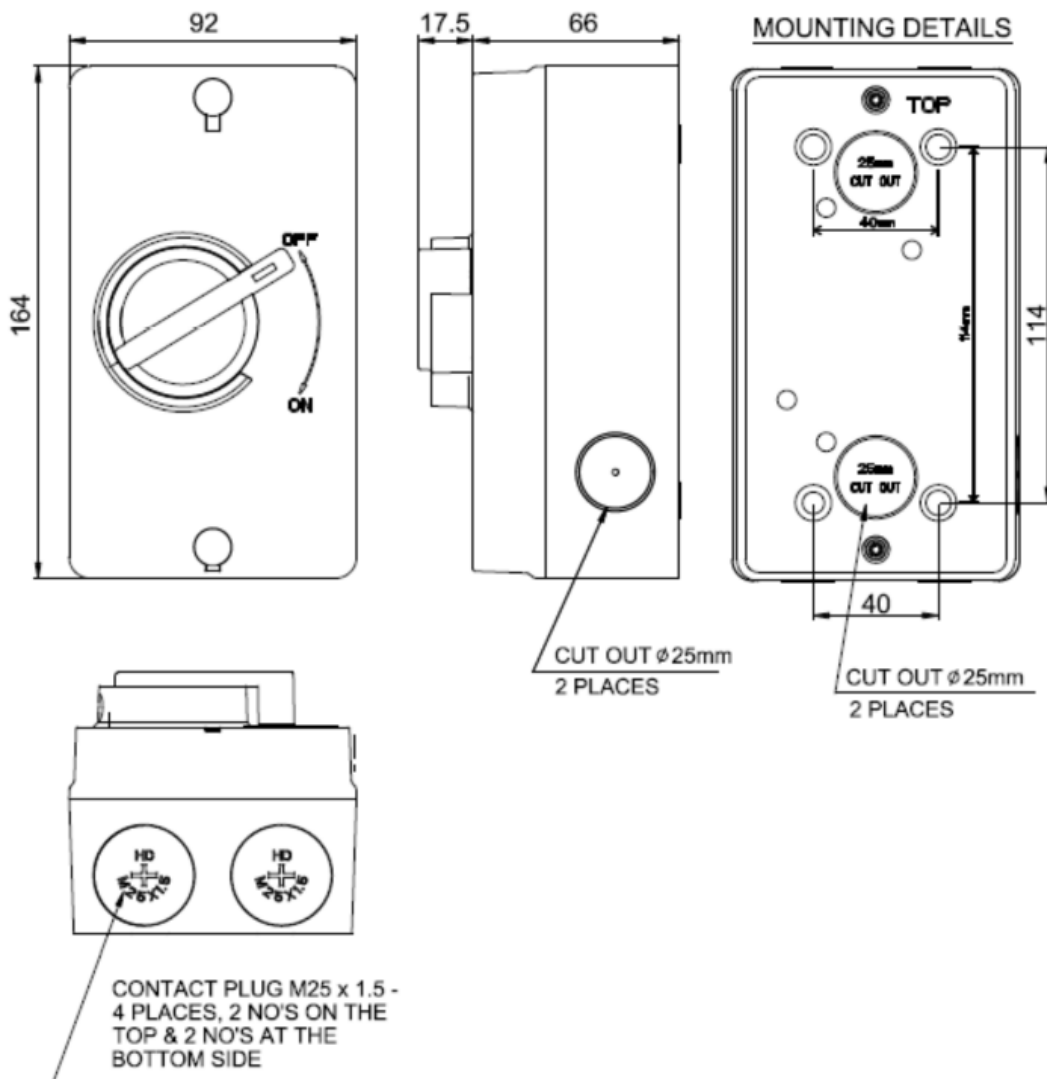
| Part Number | Description | Amps |
|-------------|-----------------------------|------|
| WSIL140 | 1Pole Weatherproof Isolator | 40 |

Technical Specifications

| | |
|--|----------|
| No. of poles | 1P |
| Rated operational voltage (AC) | 250 V AC |
| Rated Frequency | 50/60 HZ |
| Utilization Category | AC-23A |
| Rated Operational Current | 40A |
| Rated Insulation Voltage (AC) | 440V |
| Rated Impulse withstand voltage Uimp | 4 KV |
| Rated short-time withstand current for 1 sec | 480A |

| | |
|--|----------------|
| Rated short-time making and breaking capacities for 5ms | 480A |
| Terminal Screw torque value | 2.5Nm |
| Conductor (Rigid-Stranded) Min. | 6 sq.mm |
| Conductor (Rigid-Stranded) Max. | 10 sq.mm |
| Rated conditional short circuit current (Fuse protected) | 30 KA, 440V AC |
| Fuse Rating (gL/gG) | 40A |
| Motor Rating as per AS/NZS 3133 | M180 |
| Enclosure frame size | 165 x 90 mm |
| Enclosure Category | IP66 |

Dimension Diagrams



Subject to change without notice