

Weatherproof Isolator

Features

- Switch mounted in Polycarbonate enclosure.
- Switch rear-mounted for easy connection.
- Degree of protection: IP66 (AS 60529 IP rating)
- Tested and certified as per AS: 60947-3, AS/NZS: 3133 & IEC/EN:60947-3.
- Enclosure Base and cover colour: RAL7047, Operating Knob: RAL7047

Product Images



Product Details

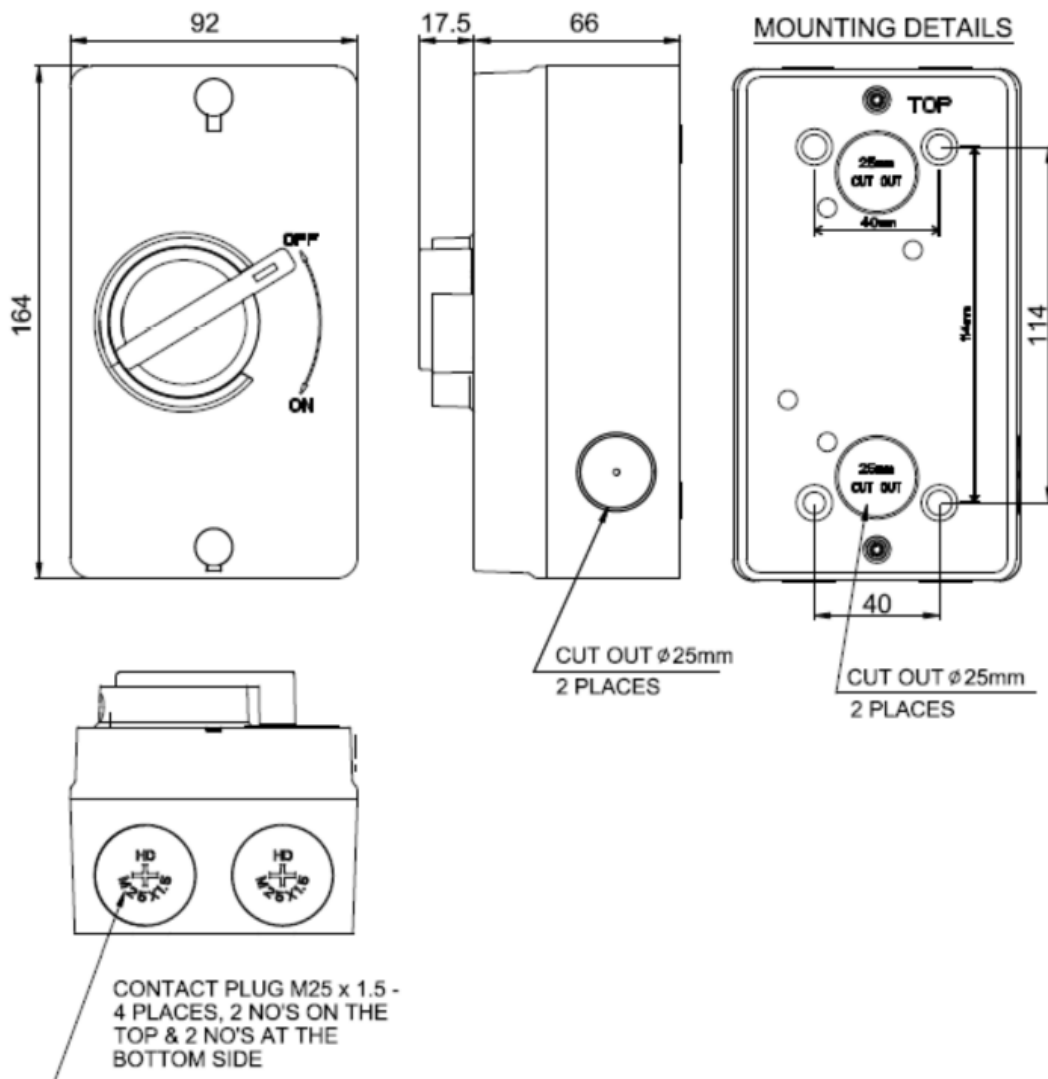
Part Number	Description	Amps
WSIL363	3Pole Weatherproof Isolator	63

Technical Specifications

No. of poles	3P
Rated operational voltage (AC)	440V AC
Rated Frequency	50/60 HZ
Utilization Category	AC-23A
Rated Operational Current	63A
Rated Insulation Voltage (AC)	440V
Rated Impulse withstand voltage Uimp	4 KV
Rated short-time withstand current for 1 sec	769A

Rated short-time making and breaking capacities for 5ms	1070A
Terminal Screw torque value	2.5Nm
Conductor (Rigid-Stranded) Min.	6 sq.mm
Conductor (Rigid-Stranded) Max.	10 sq.mm
Rated conditional short circuit current (Fuse protected)	30 KA, 440V AC
Fuse Rating (gL/gG)	63A
Motor Rating as per AS/NZS 3133	M220
Enclosure frame size	165 x 90 mm
Enclosure Category	IP66

Dimension Diagrams



Subject to change without notice